

Elk Creek Conservation Area



Forests

Fish

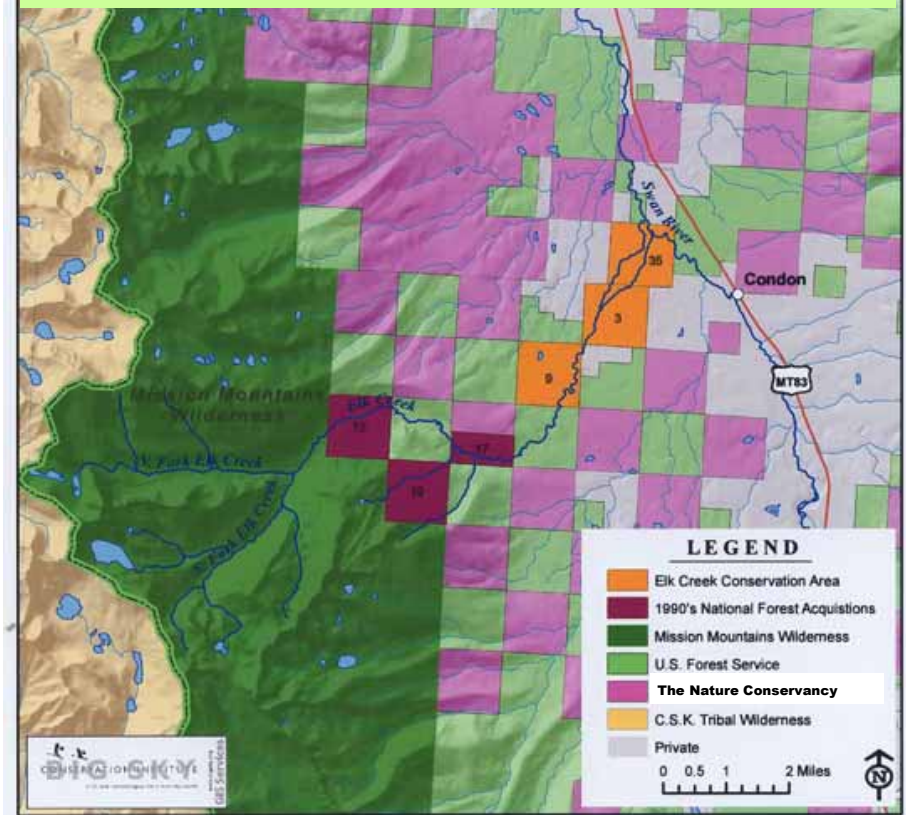
Wildlife

People

Protecting forestlands, habitat and public access.

Swan Valley, Montana

ELK CREEK CONSERVATION AREA



The Significance of Elk Creek



Elk Creek springs from the pristine Mission Mountains Wilderness. As fish habitat, Elk Creek has consistently ranked “highest and best” in every category, supporting one of the healthiest populations of bull trout in the world. Bull trout are listed as “threatened” on the federal Threatened and Endangered Species list.

The wetlands and streamside areas on Section 3 offer important low elevation wildlife habitat for grizzlies, elk and deer, and it is prime timber growing land.

Progress

Swan Ecosystem Center and its partners are protecting critical habitat along Elk Creek in the Swan Valley of Montana. These lands harbor significant habitat for bull trout and other native species.



The Forest Service acquired the upper reaches of Elk Creek, outside of the Mission Mountains Wilderness, in the 1990s.



In 2006 we completed Phase I of the Elk Creek Conservation Area by acquiring Section 35 (640 acres) with the Confederated Salish and Kootenai Tribes. This effort was made possible by The Trust for Public Land, Montana Fish, Wildlife and Parks, and Bonneville Power Administration



In 2009, The Nature Conservancy and The Trust for Public Land acquired Section 3 and Section 9 as part of the Montana Legacy Project. Section 9 will be transferred in 2010 to the Flathead National Forest.

Section 3 remains to be added to the Elk Creek Conservation Area. Swan Ecosystem Center is raising funds to match with federal dollars to acquire this square-mile section.



The community will have opportunities to learn about and practice forest stewardship on Section 3 when the project is completed.

Goal: Raise \$100,000 by July 2010



Longtime resident Neil Meyer has said, "If Swan Ecosystem Center protects Elk Creek, it will have done an enormous service and left an enormous legacy for all of us."



Board of Directors

Russ Abolt, Kvande Anderson,
Steve Ellis, Tom Giles, Glen Gray,
Pam Hamilton, Neil Meyer, Bill Moore,
Jerye Motschman, Tom Parker,
Gene Tingle

Send contributions to
Swan Ecosystem Center
6887 highway 83
Condon, MT 59826
or inquire about credit card
donations at 407-754-3137.

<i>Timeline</i>	
<p>2010-2011</p> <p>Swan Ecosystem Center will raise funds to match with federal dollars and work with partners to protect the remaining square-mile (640 acres) of Elk Creek, Section 3.</p>	Phase III
<p>2009</p> <p>The Nature Conservancy and The Trust for Public Land acquired Section 9. This parcel will be transferred to the Flathead National Forest in 2010.</p>	Phase II
<p>2006</p> <p>Swan Ecosystem Center and the Confederated Salish and Kootenai Tribes acquired Section 35 with funding from the Bonneville Power Administration.</p>	Phase I

Donations will be leveraged at a 3-to-1 ratio.